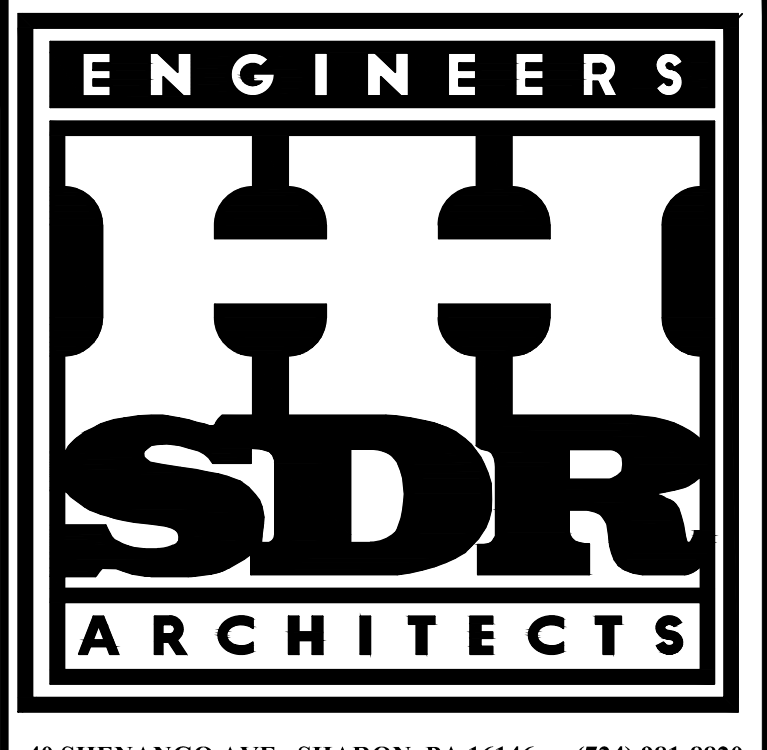




- EXISTING AREAS
- REDESIGN AREAS
- ADDITIONS



40 SHENANGO AVE., SHARON, PA 16146 • (724) 981-8820  
 130 SEVENTH ST., PITTSBURGH, PA 15222 • (412) 281-2280

**COMPOSITE FIRST FLOOR PLAN**

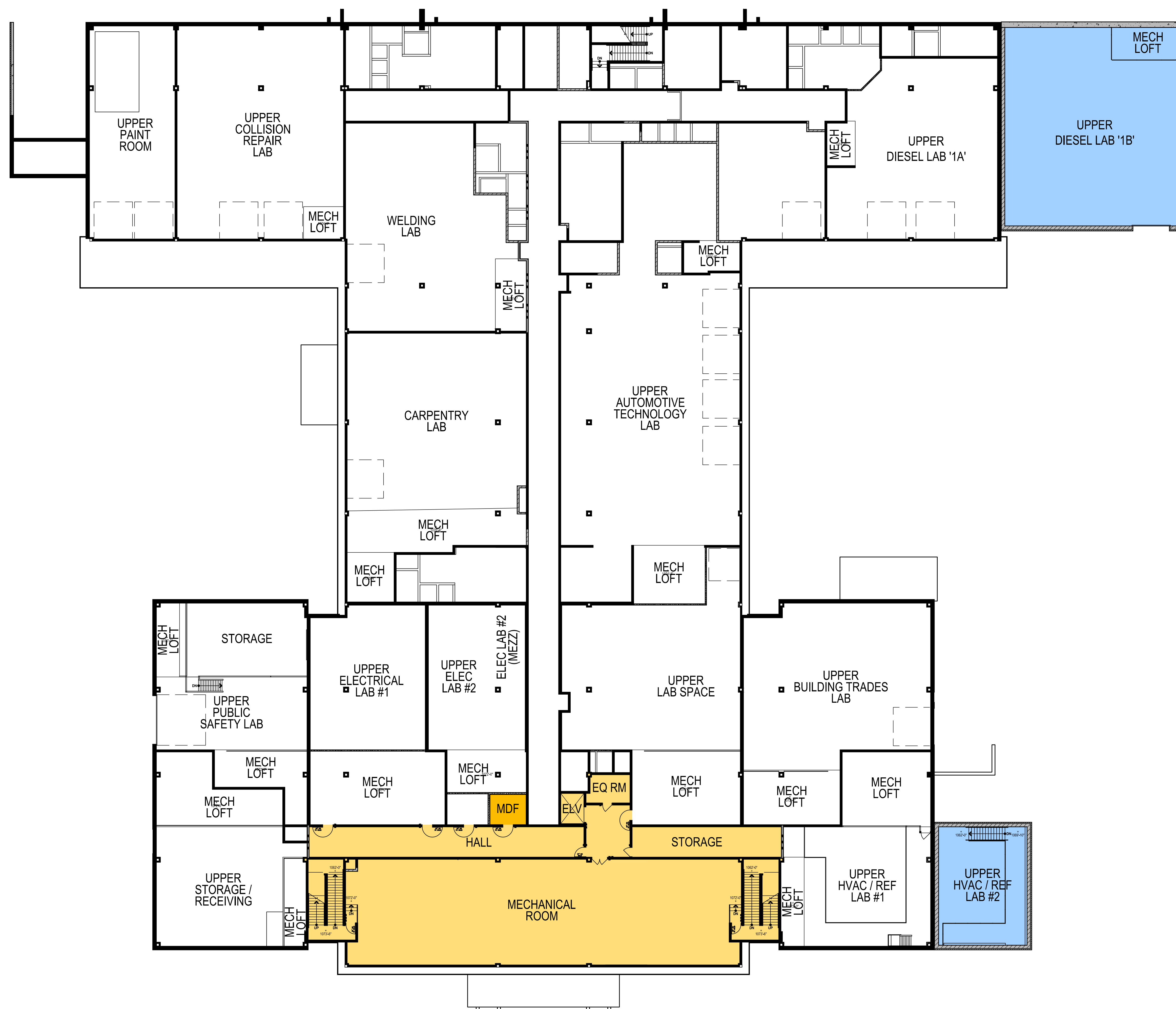
SCALE: 1/16" = 1'-0"

**ADDITIONS & ALTERATIONS**  
 TO THE  
**STEEL CENTER CTE**  
 565 NORTH LEWIS RUN ROAD  
 JEFFERSON HILLS, PA 15025  
 FOR THE  
**STEEL CENTER  
 FOR CAREER AND  
 TECHNICAL  
 EDUCATION**  
 565 NORTH LEWIS RUN ROAD  
 JEFFERSON HILLS, PA 15025

**COMPOSITE FIRST FLOOR PLAN**

COMM. NO.  
4566  
DATE  
3/17/23

SHEET NO.  
**C-1.1**  
©Copyright 2023



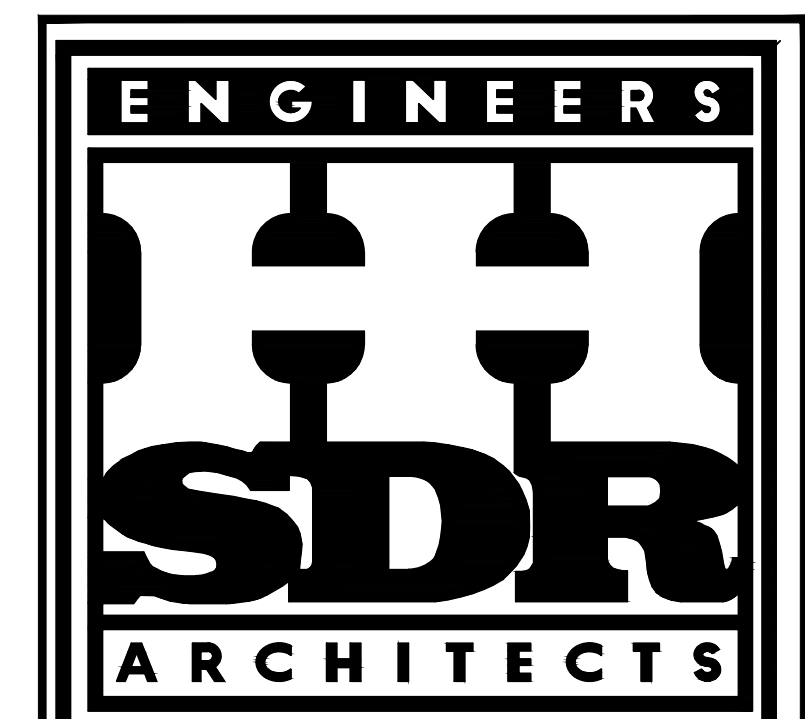
REVISIONS

PRINTED SCALE VERIFICATION:  
 BAR SCALE BELOW IS (1) ONE INCH LONG ON ORIGINAL DRAWING.  
 IF BAR IS NOT (1) ONE INCH LONG ON PRINTED MATERIAL,  
 ADJUST SCALE ACCORDINGLY.

BAR SCALE: 0 1

NOTES

- EXISTING AREAS
- REDESIGN AREAS
- ADDITIONS



40 SHENANGO AVE., SHARON, PA 16146 • (724) 981-8820  
 130 SEVENTH ST., PITTSBURGH, PA 15222 • (412) 281-2280

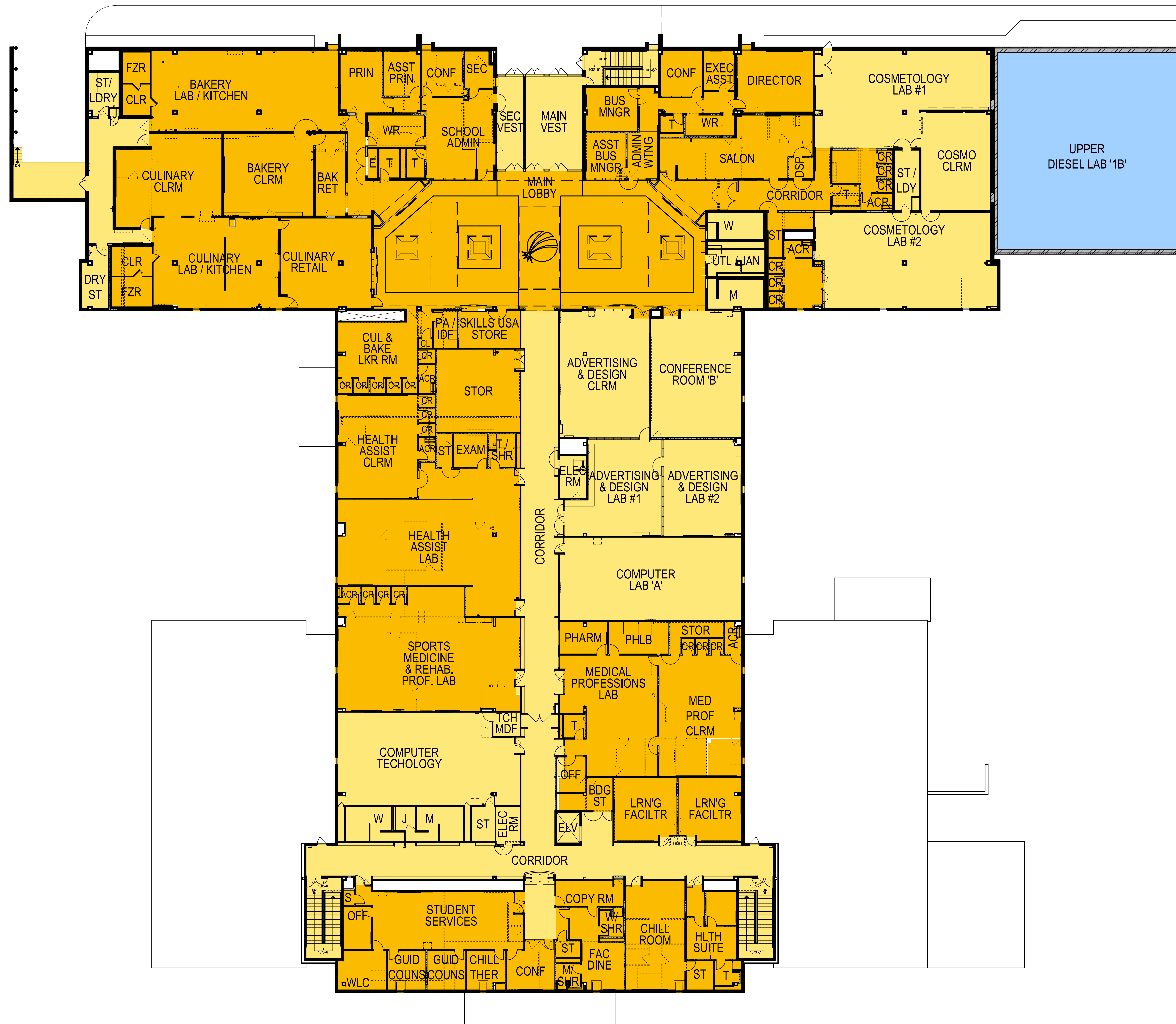
**ADDITIONS  
 & ALTERATIONS**  
 TO THE  
**STEEL CENTER CTE**  
 565 NORTH LEWIS RUN ROAD  
 JEFFERSON HILLS, PA 15025  
 FOR THE  
**STEEL CENTER  
 FOR CAREER AND  
 TECHNICAL  
 EDUCATION**  
 565 NORTH LEWIS RUN ROAD  
 JEFFERSON HILLS, PA 15025

**COMPOSITE  
 MEZZANINE LEVEL  
 FLOOR PLAN**

COMM. NO. 4566	SHEET NO. <b>C-1.2</b>
DATE 3/17/23	©Copyright 2023

  
**COMPOSITE MEZZANINE LEVEL FLOOR PLAN**  
 SCALE: 1/16" = 1'-0"





COMPOSITE SECOND FLOOR PLAN

SCALE: 1/16" = 1'-0"

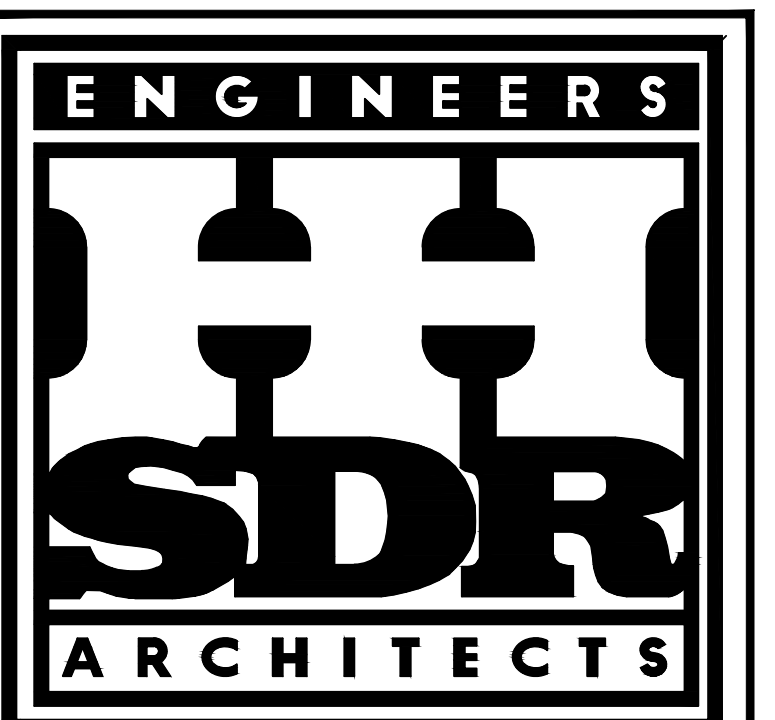
REVISIONS

PRINTED SCALE VERIFICATION  
 BAR SCALE BELOW IS (1) ONE INCH LONG ON ORIGINAL DRAWING.  
 IF BAR IS NOT (1) ONE INCH LONG ON PRINTED MATERIAL,  
 ADJUST SCALE ACCORDINGLY.

BAR SCALE: 0 1

NOTES

- EXISTING AREAS
- REDESIGN AREAS
- ADDITIONS



40 SHENANGO AVE., SHARON, PA 16146 • (724) 981-8820  
 130 SEVENTH ST., PITTSBURGH, PA 15222 • (412) 281-2280

**ADDITIONS  
 & ALTERATIONS**  
 TO THE  
**STEEL CENTER CTE**  
 565 NORTH LEWIS RUN ROAD  
 JEFFERSON HILLS, PA 15025  
 FOR THE  
**STEEL CENTER  
 FOR CAREER AND  
 TECHNICAL  
 EDUCATION**  
 565 NORTH LEWIS RUN ROAD  
 JEFFERSON HILLS, PA 15025

**COMPOSITE SECOND  
 FLOOR PLAN**

COMM. NO.  
4566  
DATE  
3/17/23

SHEET NO.  
**C-1.3**  
©Copyright 2023