



ALTERATIONS AT THE STEEL CENTER CTE

PROJECT UPDATE #15 as of January 13, 2025:

1. **Matt Fusco** continues providing daily coordination and construction observations.
2. Progress meetings are held every two (2) weeks on Tuesdays at 1:30 PM in Conference Room 'A'. **The next scheduled meeting is Tuesday, January 21, 2025.**
3. General Contractor **DiMarco's** Work Summary
 - a) Finished masonry work in the Carpentry area.
 - b) Door frame work in the Carpentry area and Phase 6 work.
 - c) Painting in the Carpentry and Auto areas.
 - d) Grinding work in the Carpentry area.
 - e) Self-leveling work on the 2nd floor lobby and entrance.
 - f) Carpet installation in the Administration area.
 - g) Acoustic ceiling work in the Carpentry area.
 - h) Phase 6 framing.
 - i) Phase 6 demolition.
4. HVAC/Plumbing Contractor **First American Industries'** Work Summary
 - a) Completed Phase 6 piping demolition.
 - b) Phase 6 duct demolition is ongoing.
 - c) Phase 6 hot water piping work began in the south end of the phase.
 - d) Completed the start up of the air handling units in the Auto Lab, Auto Classroom, Diesel Lab, and Carpentry Lab.
 - e) Started Phase 6 control work.
 - f) GRD work in the Electrical area.
 - g) Completed hot water work in the Carpentry area.
 - h) Insulation work in the Carpentry area.
 - i) Wire RTU motors to the control panel.
 - j) Final hot water connections in the Carpentry area.
 - k) Trimmed out the electrical components in the restroom and gang sink.
 - l) Installation of overhead piping in the Carpentry area for 2nd floor sinks.
 - m) Installed the existing kitchen sink in the Cosmetology area.
 - n) Installed overhead piping in the Electrical area for the 2nd floor bottle filler.
 - o) Removed the fixtures in the Men's and Women's restrooms on the 2nd floor by the elevators.
 - p) Installed overhead restroom piping in the Carpentry area for the 2nd floor.
 - q) Demolition and rough-in of the public restrooms' chase.
 - r) Worked on the floor drains in the Janitor's closet.
 - s) Phase 6 demolition of fixtures.
 - t) Phase 6 sink work.
 - u) Phase 6 rough-in of new restroom.
5. Electrical Contractor **Merit's** Work Summary
 - a) Completed branch conduit work in the Carpentry area.
 - b) Completed demolition in the Computer Technology area.
 - c) Completed wire molding and fishing plug work in the Computer Technology area.
 - d) Completed test panels, lights, and fire alarm trim work in the Electrical Lab.

- e) Completed the fire alarm installation in the penthouse, the alarm still needs to be programmed.
- f) Completed the conduit and wire installation to the fans in the penthouse.
- g) Pulled wire in the Carpentry area.
- h) Installation and wire distribution work in the Carpentry area.
- i) Installation of lighting supports in the Carpentry area.
- j) Completed Phase 6 demolition.
- k) Continue lighting work in the Carpentry area as the ceilings are installed.
- l) Phase 6 conduit work and wall rough-in.

6. OCIP – **Willis Towers Watson**

- a) Continues to provide safety assessments of the work, workers, and equipment.

***Please see the attached Allowance Summary Totals and pictures.**

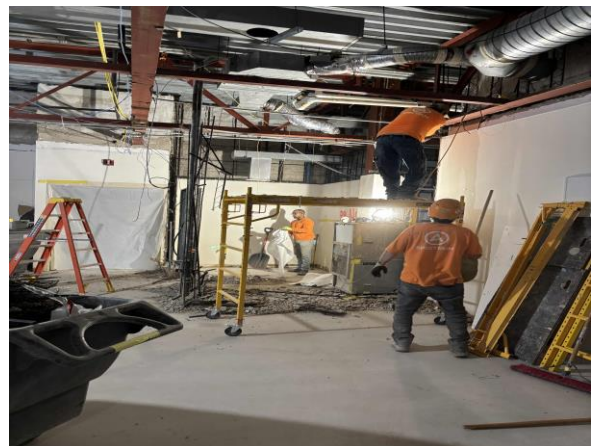
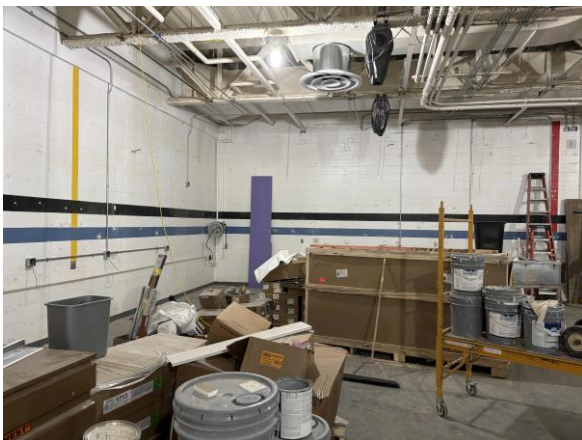
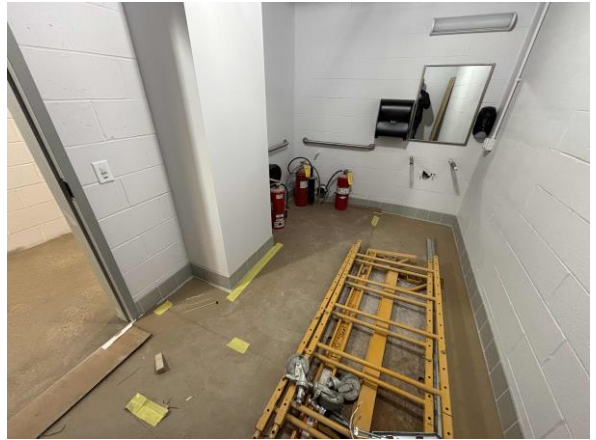
Unit Costs

Additions & Alterations to the Steel Center CTE (HHS DR #4566)

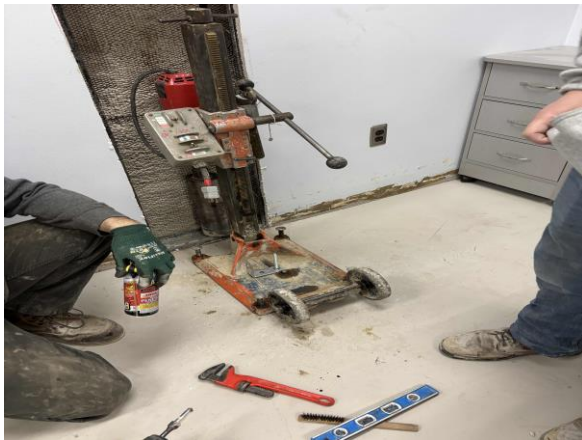
Allowance Summary Totals

General Construction	Initial Amount Total	\$429,487.00
	CMU repair in LAB D103.	\$2,012.22
	Provide doors, frames and hardware for (4) Door Openings	\$5,813.51
	Provide folding door in lieu of overhead grille at Door Opening B209/02.	\$15,686.79
	Remove and replace sidewalk outside Door Opening D110/02.	\$23,094.87
	Provide epoxy floor coating in (4) areas on First Floor level.	\$76,025.34
	Remove / reinstall wall between MEN C207 and UTL/JAN C208.	\$3,834.42
	Correct floor elevation discrepancy in SE corner of WELDING CLRM C104.	\$5,835.59
	Patch existing openings in existing CMU walls.	\$1,761.04
	Cementitious Underlayment Used (Sept 2024 - Pay App)	\$36,120.00
	Additional demo items in ELEC LAB.	\$4,454.10
	Two new access panels in metal soffit.	\$2,910.85
	Total Amount Remaining	\$226,138.27
HVAC Construction	Initial Amount Total	\$111,687.50
	Trash chute/compactor demo	\$12,233.43
	Replace exist'g defective hot water valves	\$7,245.36
	Add'l structural steel for AHU support	\$48,909.00
	Provide epoxy floor coating in (4) areas on First Floor level.	\$11,182.24
	Remove and reinstall existing louver to facilitate outside work.	\$2,194.88
	CO2 Sensor in HVAC REF LAB #1 D112.	\$3,390.19
	Total Amount Remaining	\$26,532.40
Plumbing Construction	Initial Amount Total	\$96,355.80
	Install isolation valves to separate 1st and 2nd Floor water supply	\$3,669.96
	Replace existing deteriorated hot water lines and hangers above ceilings.	\$26,115.55
	Upsize Collision Repair shop compressor.	\$11,387.67
	Relocation of washer / dryer utilities and miscellaneous plumbing items.	\$27,165.16
	New rough-ins in COSMETOLOGY LABS and (2) S-2 sinks in SALON C219.	\$3,496.17
	Check valves at existing wash fountains.	\$5,527.60
	Relocate existing waterline in Cosmetology area.	\$4,227.33
	Temporary propane line.	\$3,996.98
	Replace 35' of cracked sanitary piping.	\$2,106.30
	Install hangers on existing water lines in CARPENTRY LAB B102.	\$1,347.50
	Total Amount Remaining	\$7,315.58
Electrical Construction	Initial Amount Total	\$212,610.00
	Provide breaker locks.	\$1,392.46
	Modications to the air compressors.	\$3,508.54
	Installation of ERRC (DBA) System	\$101,597.38
	Electrical in BUILDING TRADE D110 and raceways to (6) garage door motors.	\$7,192.19
	Receptacles changes in AUTO TECH ALCOVE C101d.	\$5,119.88
	Power EF-26	\$2,372.05
	Disconnects for garage doors.	\$2,496.40
	Load Center and power for FSE Item #72	\$4,711.17
	Power to inline combustion fan.	\$2,373.12
	Additional camera cabling.	\$8,465.49
	Extra voice / data drops in IT Office	\$1,375.00
	Additional electrical items in ELEC LAB A116 / A117.	\$6,308.83
	Additional outlets in AUTO TECH ALCOVE C101d.	\$1,050.00
	Add pull station in COSMETOLOGY LAB #1 C225.	\$400.00
All Contracts	EM' transformer feed per EC RFI #36	\$4,200.17
	Total Amount Remaining	\$60,047.32
All Contracts	Initial Amount Total	\$850,140.30
	Total Amount Remaining	\$320,033.57

**#4566 Steel Center CTE, Alterations
Project Update #15
General Construction, DiMarco Construction Co., Inc.**



**#4566 Steel Center CTE, Alterations
Project Update #15
HVAC/Plumbing Construction, First American Industries, Inc.**



**#4566 Steel Center CTE, Alterations
Project Update #15
Electrical Construction, Merit Electrical Group, Inc.**

